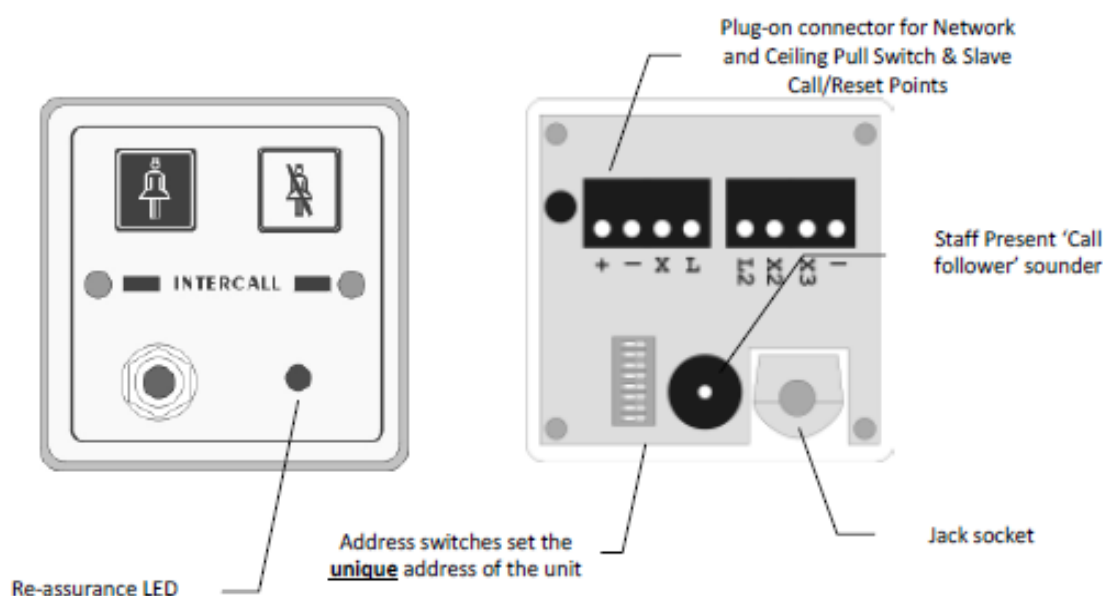


**Services** Nurse Call, Surgery Call, Warden Call, Staff Safety, Access Control, CCTV

Intercall 600	✓
Intercall 700	✓

## L622 Standard Call Point.

The L622 is the standard call point for the Intercall 600 non audio system and can generate up to six independent call levels indicated by the twin colour re-assurance LED. The 'call follower' sounder which is activated when the call point is in 'staff present' mode, alerts staff to other calls on the system. The jack socket will accept any closing contact input from pear leads, pressure mats, radio triggers and a host of other triggering devices. The X, X2 and L terminals are used to connect to CS1 Ceiling Pull Switches or SCP Slave Call Points. The L2 & X3 terminals are for SRP Slave Call Point connections. A Magnetic Reset version is available, order code L622M. For Non-Latching and remote reset applications, please see the L634 on page 42.



**Network Terminals:** Connect to the Intercall 600 (2 wire) Network. [+ , -] **OBSERVE POLARITY**

**X Terminal:** Standard Call Input which automatically generates **System Text 3**.  
*This allows the input to have a secondary description, for example 'Ensuite'*

**X2 Terminal:** Emergency Call Input which automatically generates **System Text 4**.  
*This allows the input to have a secondary description, for example 'Bathroom'*

**X3 Terminal:** Reset / Present Input for SRP Slave Reset Points

**Re-assurance LED:**  
Slow Red flashing – Standard Call  
Slow Red/Green flashing – Assistance Call  
Rapid Red flashing – Emergency/Crash Call  
Green flashing - Accepted Call – Staff on their way  
Constant Green – Nurse Present Mode

**L Terminal:** Red LED Output for ceiling pull switches with built in re-assurance lights.

**L2 Terminal:** Green LED Output for SRP (Slave Reset Points).

**Pear lead Socket:** Industry standard socket that will accept any normally open switch.  
*This socket can accept input from pear leads, pressure mats, radio triggers etc.*

**Installation:** Flush or surface mount in standard 'single size' electrical backbox.

**Size & Weights:** 80 x 80 x 40 mm, 70g